



ON THE LINE

MAGAZINE

JANUARY 2020

EVERYTHING YOU NEED TO KNOW.



SHOW US YOUR PSE.

TAKE A TRIP BACK IN
TIME AS WE CELEBRATE
OUR GOLDEN
ANNIVERSARY.

HANSON AND
COUSINS TAKE
THE PODIUM.
KINGS OF
ARCHERY.

WHAT IS PSE NATION?

WHY THE LEGEND DAVE COUSINS SHOOTS PSE.

NOCK ON'S JOHN DUDLEY JOINS FORCES WITH PSE!



CHECKOUT THE 2020 NOCK
ON BRANDED BOWS



SUPRA FOCUS XL & XL-LD WHAT'S THE DIFFERENCE?

TAZMIN TIME!

CHECK OUT OUR NEW BOWS FOR 2020!

FOLLOW US ON: FACEBOOK - YOUTUBE - WEBSITE. JUST SEARCH FOR PSE ARCHERY AUSTRALIA.

SERIES **DI**

The logo features the letters 'PSE' in a bold, white, sans-serif font. A stylized white arrow points to the left, passing through the 'P'. A horizontal line extends from the right side of the 'E'.

PSE

A R C H E R Y

AUSTRALIA

WELCOME TO PSE ARCHERY AUSTRALIA



Hello and welcome to **PSE ARCHERY AUSTRALIA**. What started out as an idea over 14 months ago has finally become a reality.

Firstly I would like to thank Precision Shooting Equipment in the United States for giving me the go ahead to pursue this with their blessing. The whole purpose of this venture is to promote and market not only PSE in Australia but how archers in Australia use their PSE gear and celebrate their achievements no matter what their skill levels are and as an online information resource, families and individuals can experience the sport of archery by liaising with their closest PSE Dealer and directed to the local Archery Club.

www.psearchery.com.au has been modelled on the USA Precision Shooting Equipment website. By adding a local Aussie feel to it's design, we can include features which will allow our Australian archers, a platform to interact with each other and PSE. www.psearchery.com

Show Us Your PSE is where Australians can "show off" their pride and joys on a public digital forum for the whole world to see. If you want to



show the world your bow, simply email a photo of it here pics@psearchery.com.au

Australia is vast, so we have included a simple Google map finder to show you your nearest PSE Dealer and opening times to suit your needs.

PSE Archery Australia is not an online store, so we can recommend the nearest dealer closest to you that has what you want. Local dealers can also promote their PSE related business activities in our newly introduced

PSE Branded Magazine ON THE LINE. This magazine is published the last half of each month and is available as a free PDF download from www.psearchery.com.au



or from the Apple iBooks App on your Apple smart device. Simply just open the iBooks App, click on Bookstore and search for **PSE ARCHERY AUSTRALIA**. All available issues will appear ready to download for free and ready to read digital content and videos right from your smart device. Anytime.

You can follow us on Facebook and subscribe to our video channel on YouTube for more up to the minute updates again just search for **PSE ARCHERY AUSTRALIA**.

Thank you
Lyndon May



WORLD CLASS ARCHER, EDUCATOR AND INFLUENCER

JOHN DUDLEY JOINS FORCES WITH PSE.

PSE celebrates 50 years of building industry-leading bows by forging a major partnership with world-class archer, educator and influencer, John Dudley of NOCK ON® Archery. PSE and Dudley will work closely on the new developments of specific, innovative new products for both the PSE and NOCK ON® Archery brands. Pete Shepley's vision is to unite his talented PSE team with the archery development efforts of Dudley and NOCK ON® Archery to solidify his lifelong pursuit of building the most advanced bows in World and growing the sport of archery.

Pete Shepley, founder of PSE, boldly stated, "We promised the PSE Nation that we had huge things planned for 2020 and partnering with John Dudley and the NOCK ON® brand proves it. Not only is Dudley one of the most talented archers and bowhunters in the world, but his ability to educate and advocate for archery and bowhunting is second to none. He brings a wealth of technical knowledge and in-the-field, practical experience along with a community that loves seeing him share his experiences. I can promise you, we've got some big things we are working on and I can't wait to introduce them to archers and bowhunters everywhere. But — this is just the beginning."

John Dudley's resume is packed with more than three decades of competition on professional tournament circuits while working as an industry-leading consultant for many top-level archery brands. John was a world-class member of Team USA where he won individual and team medals for US Archery while continuing to educate at the highest levels in archery across the globe through articles and video content. He enjoys sharing his extensive archery and bowhunting knowledge as a public speaker while having amazing success as a hunter.

John host the world-renowned NOCK ON® Podcast focusing on teaching the NOCK ON® Nation followers. He has appeared on many of the world's most-watched shows, podcasts and documentaries, as well as his very own NOCK ON® media platforms. Dudley's continual drive is sharing all his knowledge in order to help his loyal NOCK ON® Nation community improve, while



NOCK ON

promoting ethics, clean eating and physical fitness.

"I'm truly humbled for the opportunity to work so closely with such an iconic industry leader and brand," stated Dudley. "My life's goal is to grow archery to the highest capacity possible. I know this is also a dream of Pete Shepley and the reason why I knew this partnership is so valuable to everyone enjoying our sport. My very first bow was a PSE and shooting those bows through my teenage years carved out my heart for archery. I am honored to

get back to my roots and I'm 100% committed and excited to work with the PSE team to bring bowhunters and target archers around the world an even higher level of product, knowledge and archery experience."

To learn more about PSE Archery visit

For more information on John Dudley and the NOCK ON® brand, visit www.nockonarchery.com.

2.1

EVO NTN 33





WHY THE LEGEND DAVE COUSINS SHOOTS PSE

Tucson, AZ – Precision Shooting Equipment (PSE Archery), the world's leader in archery equipment, is pleased to announce the exclusive signing of legendary archer Dave Cousins to their elite pro staff. A 40-time National Champion and 15-time World Champion, PSE is proud to have Cousins join their already impressive roster.

“Dave Cousins is a shooter who is second-to-none,” stated Pete Shepley, founder of PSE Archery. “We are not only looking forward to him competing for us, but also for him to provide his skills and archery knowledge when it comes to our engineering and testing process. With Dave on board, PSE is only going to get better.”

Cousins signing with PSE comes at a time of resurgence for the family-owned bow company, as PSE has seen an influx of fresh talent and an increased competitive profile just in time for its 50th birthday. PSE recently announced its 2020 product line on October 1st, 2019 with an emphasis on creating an unparalleled shooting experience with customisable options for every shooter, both in their target bows and bowhunting product lines.

According to Cousins, who started as a young bowhunter before moving into target archery, he's honoured to be a part of the PSE story and a contributor to the PSE product going forward. His goal is to help PSE further solidify its longstanding place in the archery industry.

“I'm humbled and honoured to be part of a team that has a 50-year history in developing industry-leading technology, stated Cousins. “I believe my vision, technical know-how, proven record as a competitor, working knowledge of the industry from the design board to the storefront combined with my passion for the sport will aid PSE solidifying its position as a cornerstone company in the archery industry for another 50 years.”

“I'm humbled and honoured to be part of a team that has a 50-year history in developing industry-leading technology, stated Cousins. “I believe my vision, technical know-how, proven record as a competitor, working knowledge of the industry from the design board to the storefront combined with my passion for the sport will aid PSE solidifying its position as a cornerstone company in the archery industry for another 50 years.”



3.1

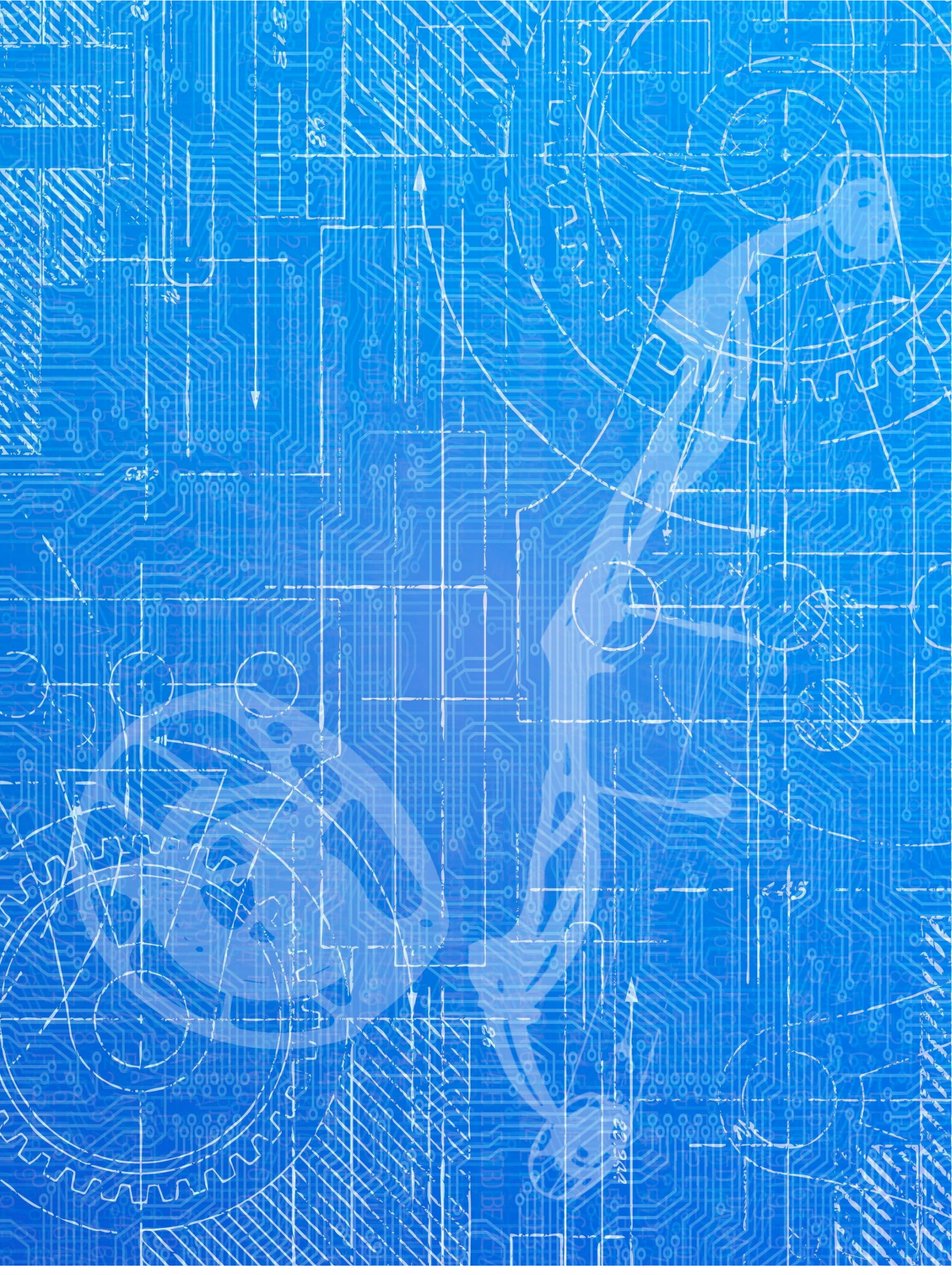
WHY THE LEGEND DAVE COUSINS SHOOTS PSE



Optics4U



www.optics4u.com.au - email: info@optics4u.com.au



WHAT'S THE DIFFERENCE BETWEEN: **SUPRA FOCUS XL & XL-LD**

SUPRA FOCUS XL

The SUPRA FOCUS XL™ is an entirely new design powered by PSE's new EM cam. It offers a 40" axle-to-axle design and 7½" brace height. The PSE SUPRA FOCUS™ FAMILY offers an unprecedented combination of performance and forgiveness. Longer deflexed risers and Evolve® Cams make the Supra Focus family of target bows leaders on today's competitive landscape.

BRACE HEIGHT: 7½"
 AXLE-TO-AXLE: 40"
 ATA/IBO SPEED: 327-319 FPS
 LETOFF: 75%
 MASS WEIGHT: 5.1 LBS.
 DRAW LENGTH RANGE: 24" - 30"
 DRAW WEIGHTS (LBS.): 50, 60
 LIMB BOLT TURNS: 10
 CAM: EM
 FINISHES: American Flag, Good Vibrations, Black Cherry, White, Navy Blue, Platinum Titanium, *Sky Blue, *Orange, *Satin Mercury
 *PREMIUM COLOURS AT ADDITIONAL CHARGE
 INNER MOD – 01325EMHL 85% LET-OFF
 INNER MOD – 01325EM65 5% LET-OFF

SUPRA FOCUS XL-LD

The SUPRA FOCUS™ XL LD is driven by PSE's SE cam. This long-draw bow features a 40" axle-to-axle design with an 8" brace height. The PSE SUPRA FOCUS™ FAMILY offers an unprecedented combination of performance and forgiveness. Longer deflexed risers and Evolve® Cams make the Supra Focus family of target bows leaders on today's competitive landscape.

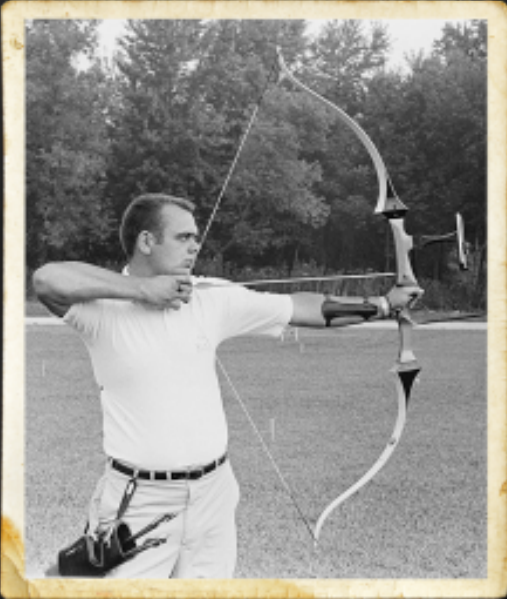
BRACE HEIGHT: 8"
 AXLE-TO-AXLE: 40"
 ATA/IBO SPEED: 312-304 FPS
 LETOFF: 65-75%
 MASS WEIGHT: 5.3 LBS.
 DRAW LENGTH RANGE: 28" - 33½"
 DRAW WEIGHTS (LBS.): 50, 60
 LIMB BOLT TURNS: 10
 CAM: SE
 FINISHES: American Flag, Good Vibrations, Black Cherry, White, Navy Blue, Black, Platinum Titanium, *Sky Blue, *Orange, *Satin Mercury
 *PREMIUM COLOURS AT ADDITIONAL CHARGE
 INNER MOD – 01325SEHL
 80-90% LET-OFF (HIGH)

SUPRA FOCUS XL XL/LD



PRECISION SHOOTING EQUIPMENT: 50 YEARS YOUNG.

PETE SHEPLEY BEGAN THE MODERN ARCHERY REVOLUTION IN 1970.



The PSE story begins in 1970, when Pete Shepley (then a product engineer for Magnavox Corporation) decided to take his love of archery from a hobby to a full time profession. With the support from his peers at work and in the archery industry, Pete knew that he could advance the archery technology of the time into something new, something different, something better.

The company Pete founded, Precision Shooting Equipment (PSE), is now the largest privately-owned archery equipment manufacturer in the United States.

In the early days of the company, Pete experimented with accessories such as release aids, arrow vanes in place of feathers and much more, before finally turning his focus to the ultimate challenge...the perfection of the compound bow. Pete introduced the first PSE

compound bow at an archery tournament in Indiana, and within a week he received orders for 200 more, then another 700 from across the country.

In 1982, PSE moved its operation from a small building in Mahomet, IL to Tucson, AZ. In contrast with its humble beginnings, PSE's current corporate offices, factory, and pro shop facilities fill the space of one city block. But while PSE has gotten bigger and better, we've never forgotten the passion of archery that inspired our founder, and that continues to inspire us every day.

The PSE story begins in 1970, when Pete Shepley (then a product engineer for Magnavox Corporation) decided to take his love of archery from a hobby to a full time profession. With the support from his peers at work and in the archery industry, Pete knew that he could advance the archery technology of the time into something new, something different, something better.

The company Pete founded, Precision Shooting Equipment (PSE), is now the largest privately-owned archery equipment manufacturer in the United States.

In the early days of the company, Pete experimented with accessories such as release aids, arrow vanes in place of feathers and much more, before finally turning his focus to the ultimate challenge...the perfection of the compound bow. Pete introduced the first PSE compound bow at an archery tournament in Indiana, and within a week he received orders for 200 more, then another 700 from across the country.

In 1982, PSE moved its operation from a small building in Mahomet, IL to Tucson, AZ. In contrast with its humble beginnings, PSE's current corporate offices, factory, and pro shop facilities fill the space of one city block. But while PSE has gotten bigger and better, we've never forgotten the passion of archery that inspired our founder, and that continues to inspire us every day.



KINGSOFT ARCHERY

S E R I E S

06



HANSON AND COUSINS: KINGS OF THE PODIUM

It was a great weekend for Team PSE's at the JVD Open 2019 Kings of Archery! Stephan Hansen topped the 1st Place podium with Dave Cousins coming in 3rd. Team PSE's Domagoj Buden also came in 5th after a rollercoaster weekend! Congratulations to Stephan, Dave, and Domi for their impressive showing at Kings of Archery!



PHOTOS © Rene van Glabbeek



OUR NEW BOW LINEUP FOR 2020

With 2020 now upon us, choosing the correct bow that suits you can be a daunting task however, we believe that we have a range of bows to suit the beginner to the seasoned hunter and professional archer. With a catalogue of over 30 bows, choosing what's right for you just got easier.

PSE Pro Series Bows represent the finest engineering, design and build quality in the archery industry. Some old favourites have been joined with a contingent of new and exciting bows, like the Carbon Air® Stealth Mach 1, the EVO NXT range of bows featuring ATA lengths ranging from 31" to 35" and the Bandit NXT. Noticeably the EVOLVE 28 is still in for 2020.

PSE Core Series bows represent engineering excellence combined with incredible value and performance. A great range of bows to get a bang for your buck.

PSE Target Series bows are used exclusively by the world's best competition archery shooters. This range has had the most additions to the 2020 lineup which feature some with longer ATA, smoother faster cams and longer deflex risers. Catering to the most demanding archer, the 2020 range of target bows also gives you some new and striking colour schemes which include customisation of risers, cams, limbs and strings.

If your ideal bow is used for competition, traditional or longbow shooting, the 2020 PSE range of Heritage bows have got you covered. From HITEC alloys to beautiful selected timbers.



2020 EVO NTN 33



NOCK ON CARBON AIR
STEALTH MACH 1



7.1



TO VIEW DETAILS OF THE BOWS JUST CLICK ON THE IMAGE TO VIEW.

IF THIS IS A DOWNLOADED PDF, VISIT WWW.PSEARCHERY.COM.AU TO VIEW THE DESCRIPTION OF THE NEW 2020 BOWS.

PSE
ARCHERY

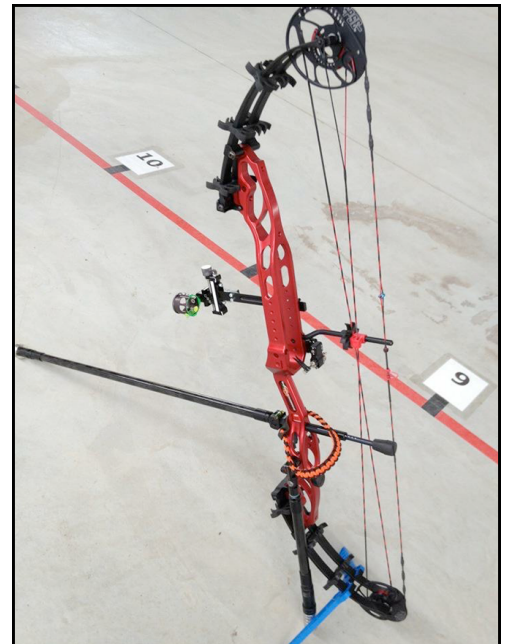
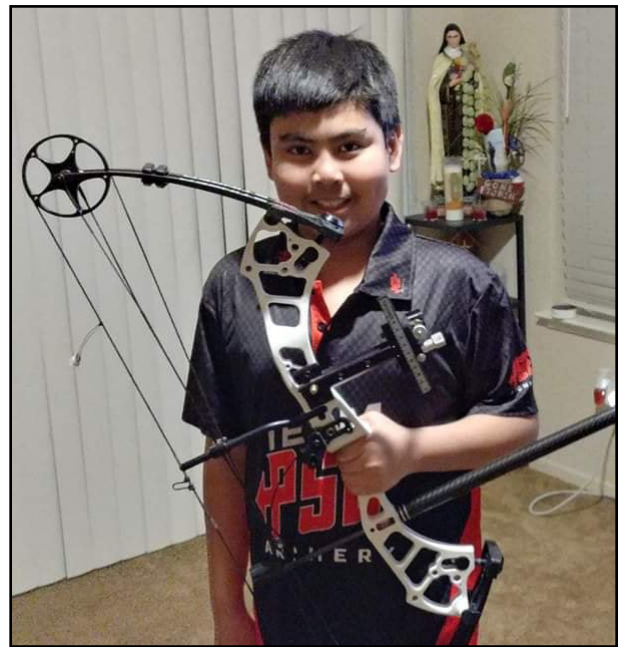


SHOW US YOUR PSE

08

SHOW US YOUR PSE!

pics@psearchery.com.au





WHAT IS PSE NATION?

Welcome. You are here because you recognise quality archery equipment when you see and shoot it. You appreciate the highest level of engineering and design in the industry. And you value the archery investments you've made in the past – and will do so with future purchases.

If you shoot PSE, you're a member of PSE Nation.

If you appreciate PSE but have never shot one, you're going to love becoming a member of PSE Nation.

What's it cost to join? Absolutely nothing except the willingness to be a part of something big, something where you feel valued and appreciated, and where adventure lives.

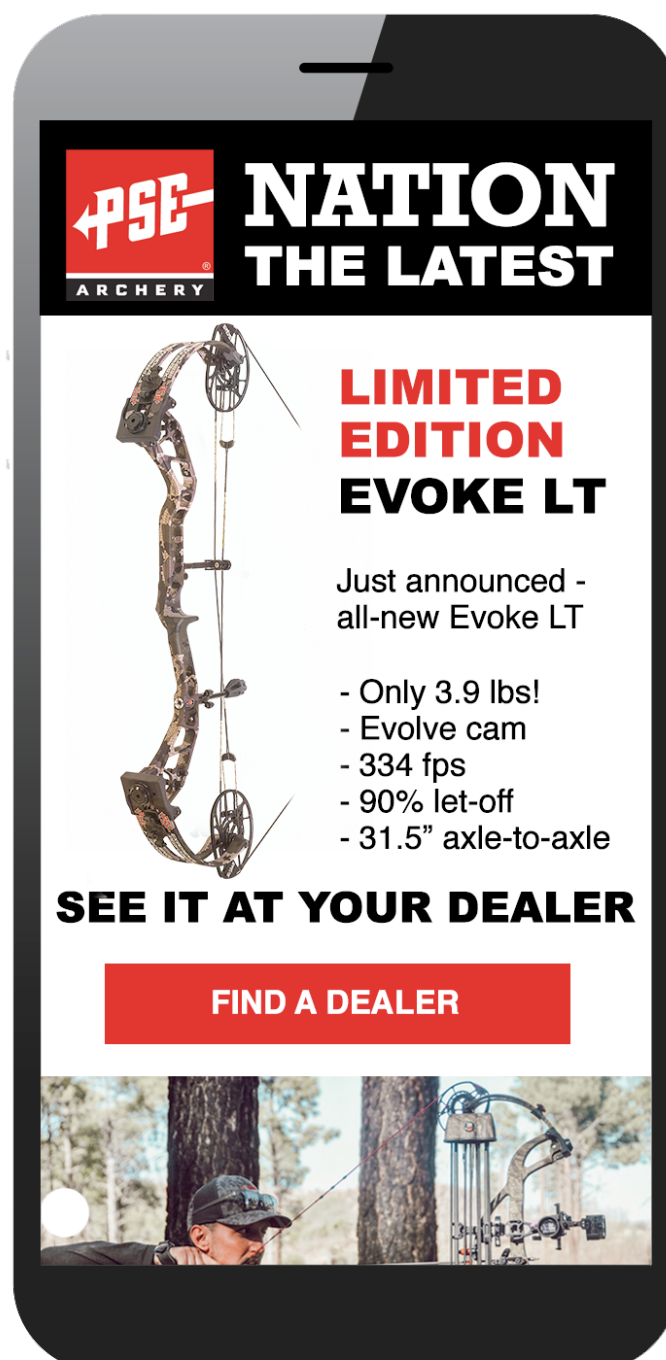
Just sign up using the form on this page with your email address. We'll be in touch.

Every member of PSE Nation is welcome at our Tucson, Arizona, headquarters. We offer free tours Monday-Friday (closed Federal holidays). You'll see how we build bows, make strings and so much more.

Every week, PSE Nation emails keep you posted on everything happening at Precision Shooting Equipment – and around the world of bowhunting and target archery. Links to the latest videos


and content from PSE Nation partners, special offers, product news, and even giveaways – it's all part of being a member of PSE Nation – and it's all absolutely free.

Go to www.psearchery.com.au to register today!



PSE
ARCHERY

NATION
THE LATEST




LIMITED EDITION EVOKE LT

Just announced - all-new Evoke LT

- Only 3.9 lbs!
- Evolve cam
- 334 fps
- 90% let-off
- 31.5" axle-to-axle

SEE IT AT YOUR DEALER

FIND A DEALER



BENCHMARK 3D – ALL THE INFORMATION

REGISTER TODAY: ROBERT VAYRO 0438 997 638

Date:

29/30 August 2020

Event Location:

98 Frazer Drive Tweed Heads South NSW 2486
Australia
(No Dogs Allowed)

Places to Stay:

Camping onsite is available at a cost of \$10 per site for the weekend.

Flush Toilets and Hot Showers onsite.

All Enquires to

Benchmark3DArchery@gmail.com

800m Away -

Colonial Tweed Holiday and Home Park - (07) 5524 2999
2 Philp Parade, Tweed Heads South NSW 2486

1.5km Away -

BIG4 Tweed Billabong Holiday Park - (07) 5524 2444
30 Holden St, Tweed Heads South NSW 2486

Registration

Pre-registration is compulsory.

Archers are welcome on the day but will be charged a late Fee of \$10

Food and Drinks Available All Weekend

Canteen Open for Breakfast and Lunch

Cafe Open for Cake and Coffee

Restaurant and Bar Open for Dinner

Friday

Welcoming and Sign on

Dinner Cost - TBA

Bar Open - TBA

Saturday

2 x 10 3D Courses

Team Shoot

Dinner Cost - TBA



Bar Open - TBA

Sunday

2 x 10 3D Courses

Top 10 Shoot Offs

Top 10 Women Shoot Off

Benchmark Top 5 Shootout

Presentations

Each Benchmark Event will shoot four by ten target ranges across two days, two by ten targets ranges on day one and two by ten targets ranges day two.

At the start of each day there will be a Muster, to form groups and discuss any general rules or information about the day.

No need to join just pay the small insurance fee \$10

Each shooter will receive scorecards when signing on for the weekend before the Event starts. Each shooter is responsible for having their scorecards and being at the muster location on time.

There is No Smoking allowed on ranges or at practice butts. Smoking in general areas is ok as long as the smoker is mindful of the non-smokers around them.

Vaping is allowed at practice butts area and on ranges but as long as the person vaping is mindful of the others.

Littering will not be tolerated at the Event venue. Anyone littering (This includes Cigarette butts) will be the subject to disqualification from the Event and may be asked to leave the venue.

Alcoholic beverages are not to be consumed or carried onto the Event Ranges or you will be the subject to disqualification from the Event.

Alcoholic beverages are allowed on the Event grounds e.g. General Areas and Campsites But need to follow any Liquor Licensing laws any venue may have. Failing to comply with this, will be the subject of disqualification from the Event and you may be asked to leave the venue immediately.

No archer is to compete while under the influence of alcohol and will be the subject to disqualification from the Event and may be asked to leave the venue.

Offensive language and behaviour will not be tolerated. Please keep offensive language to a minimum and be mindful of those around you. First offensive a warning will be given, Second offensive warning will be given and third offensive you will be asked to leave.

Unsportsmanlike conduct on the ranges or tournament grounds will not be tolerated.

Weather - Benchmark retains the right to delay or cancel a day's Event in case of severe weather. If a day's round is cancelled all competitors will receive zero points for the cancelled day. No refunds will be made and all results and paybacks will be based on two rounds of ten, twenty targets being completed. No rounds will be decided on by the results of partially completed rounds.

Anyone found stealing from the venue including signage will be prosecuted and banned.

No one is to enter any range areas before the competition unless given permission.

Benchmark Event is pre nomination only. Archers are welcome to sign up on the day but will be subject to a \$10 late fee.

Competitors unable to attend the Event after nominating and paying will have their fees returned after a processing fee of \$10 is deducted.

Dress appropriately in a presentable appearance. Benchmark officials hold the rights to ask someone to change if they are deemed the clothing is offensive or inappropriate.

Competitors are to wear enclosed shoes. Anyone wearing thongs, sandals or open toe shoes will not be allowed to shoot at the practice range or on the 3D range.

Spectators & Guests are only allowed on the tournament ranges if they have signed on as a Visitor and follow the rules of an archer. Cost \$5 per person for insurance purposes.

Mobile phones are allowed on ranges and are to be turned onto silent unless the shoot group agrees it can be left as normal. If making calls please keep calls to a minimum so they do not affect the archers around you. Benchmark encourages pictures to be taken and shared on Social Media throughout the days shooting.

By registering to participate in a Benchmark 3D Event, all shooters are acknowledging to agree that photographs or videotapes of them may be taken. These photographs and videotapes can be used by Benchmark 3D in marketing to help grow the sport.

Targets will be 3D targets manufactured by McKenzie Targets, Rinehart, Cougar targets or Wildcrete targets that feature the Universal scoring system.

Archers can only compete in one division at an Event.

Maximum Distance for each peg are as follow

Orange Peg – 50 yards

Green Peg - 45 yards

White Peg – 35 yards

Red Peg – 25 yards

Subject to Range Finder tolerances between Range Finder brands*

Archers shooting from the same colour peg in a group are to form a rotation order allowing archers to take turns in shooting first and last. This order is to be followed for the days shooting. The order should be decide by the group before an arrow is shot. Easiest way to decide this is to turn the score cards over so no names are showing and shuffle, then pull one card out at a time and this will form the shoot order for the day. Failing to follow a shooting order will lead disqualification.

Groups with archers shooting from different pegs will rotate shoot order where possible with no archer to advance beyond their peg before shooting.

Shoot groups will be allocated for Benchmark Money Class, F50 and M50 classes for day one, day two shoot groups will be peered grouped based off day one scores.

All other classes may choose their own groups at muster for day one. Anyone that needs a group will be put in one. Benchmark 3D has the right to break up any group up.

Day two groups will be peer grouped based off day one scores for their divisions. Anyone with special requirements or shooting with their kids is to see registration area at muster time so groups can be sorted.

Each group is to have a minimum of four archers and a maximum of five archers. Each group is to have a minimum of two adult archers to score.

Each shooter when shooting is to be within 6 inches or one hundred and fifty millimetres of the shooting peg, – best outcome is to straddle or touch the peg with their foot. The shoot groups are to police this ruling. A shooter may receive a warning from the group for failing to comply. Repeat offence is a deduction of five points from their target score. Anyone blatantly cheating to get an advantage will be disqualified and asked to leave with no refund.

Lost arrows archers are allowed to have a quick look where time permits without holding up any other shoot groups behind them. Archers are welcome to come back and look for arrows once the days shooting has finished.

Each archer is allowed one arrow to be shot per target and will be shot from their designated peg. Anyone seen to shoot more than one arrow at a target will be disqualified and asked to leave with no **refund**.

Lost arrows archers are allowed to have a quick look where time permits without holding up any other shoot groups behind them. Archers are welcome to come back and look for arrows once the days shooting has finished.

Each archer is allowed one arrow to be shot per target and will be shot from their designated peg. Anyone seen to shoot more than one arrow at a target will be disqualified and asked to leave with no refund.

Archers may have assistance from two archers in their group. Only one person may use a golf size umbrella as a wind break or sun shade and the other person may use a hat, clipboard as sun shade.

Shooters may use range finders and binoculars with no magnification limits.

Each member of the group will be allocated one minute and thirty seconds to shoot. Any individual that fails to follow the time limit will receive a warning from the group for the first offence. Second offence is a deduction of five points from that target score. Third offences will result in disqualification.

There are no limit of let downs a shooter may have in the allocated time to shoot of one minute and thirty seconds.

Equipment failure the archer may leave the range in the safest way possible. The archer has one hour to make repairs and be back on the range. The Equipment Failure must be report to a range or event official. The archer is to re-join with the closes group to where the equipment failure took place. If the archer has targets He or She has not shot when re-joining a group they can be made up with the group they have joined or with a range official. The Archer's group may continue on.

Archers in pin divisions are allowed to move their pins left or right only.

Benchmark - Open to Male or Female shooting a compound, recurve shot with no restrictions on sights, stabilisers, or style of release.

Archers will shoot from the ORANGE peg maximum 50 yards

Male 50 or M50 - Open to Male shooting a compound or recurve shot with no restrictions on sights, stabilisers, or style of release.

Archers will shoot from the ORANGE peg maximum 50 yards

Female 50 or F50 - Open to Female shooting a compound or recurve shot with no restrictions on sights, stabilisers, or style of release.

Archers will shoot from the ORANGE peg maximum 50 yards

Male Pins or MP - Open to Male shooting a compound, recurve shot with no restrictions on stabilisers, or style of release. A sight shall have fixed pin, cross air, or circle style pins with or without a lens or magnification. If circle style pins are used, all circles must be the same size.

Archers will shoot from the GREEN peg maximum 45

Female Pins or FP - Open to Female shooting a compound, recurve shot with no restrictions on stabilisers, or style of release. A sight shall have fixed pin, cross air, or circle style pins with or without a lens or magnification. If circle style pins are used, all circles must be the same size.

Archers will shoot from the GREEN peg maximum 45

Senior Open or SO - Open to Male or Female over the age of fifty shooting a compound, recurve shot with no restrictions on sights, stabilisers, or style of release.

Archers will shoot from the GREEN peg maximum 45 yards

Hunter Class Male or HCM - Open to Male shooting a compound shot with or without sights. Sights are to have no magnification and can be either a single or Multiple Pin or range finding scope eg Garmin Xero.

Restrictions on stabilizer and stabilizer system are a maximum front length of a Option Archery Quivalizer stabilizer on the front. The stabilizer system can have a side bar and be any shape or configuration. Arrows are to be a standard carbon size of .246 or less.

Arrows must have screw in points

Arrow rest is to be a hunting style (eg. no lizzard tongue rest).

No restrictions on style of release, can be shot with a release aid or fingers.

Archers will shoot from the Green peg maximum of 45 yards

Fingers Open or FO - Open to Male or Female shooting a compound or recurve shot with or without sights. No restriction on sights or stabilisers. Must be shot with fingers directly contacting the bowstring using bare fingers, finger tab or a glove.

Archers will shoot from the White Peg maximum of 35 yards.

Hunter Class Female or HCF - Open to Female shooting a compound shot with or without sights. Sights are to have no magnification and can be either a single or Multiple Pin or range finding scope eg Garmin Xero. Restrictions on stabilizer and stabilizer system are a maximum front length of a Option Archery Quivalizer stabilizer on the front. The stabilizer system can have a side bar and be any shape or configuration. Arrows are to be a standard carbon size of .246 or less.

Arrows must have screw in points

Arrow rest is to be a hunting style (eg. no lizzard tongue rest).

No restrictions on style of release, can be shot with a release aid or fingers.

Archers will shoot from the WHITE peg maximum 35 yards

Trophy Class or TC Open to Male or Female shooting a compound or recurve shot with no restrictions on sights, stabilisers, or style of release. This class is for the everyday archer that just likes to shoot and have fun. There are trophies but there is no prize money for this class.

Top Archers are NOT allowed in this class.

This class is to encourage archers that just like shooting.

Benchmark has the rights to stop an archer shooting in this class.

Archers will shoot from the WHITE peg maximum 35 yards

Barebow Open or BO - Open to Male or Female shooting a compound or recurve shot without sights. Fingers directly contacting the bowstring using a glove, finger tab or bare fingers. No sighting device of any kind may be used. A rest and plunger are all that may reside within the sight window of the bow. There shall be no markings on the bow or bowstring that could be construed as sighting marks or String walking marks. Face and/or string walking are permitted in this class.

Archers will shoot from the WHITE peg maximum 35 yards

Barebow Recurve or BR - Open to Male or Female shooting a recurve or longbow without a sight. No restrictions on stabilizer length or stabilizer system. A rest and plunger are all that may reside within the sight window. A clicker is allowed but must not be mounted in the sight window of the riser. There will be no markings on the bow or on the bowstring that could be construed as sighting marks. Shot with a glove, finger tab or bare fingers. Arrows are to be of the same Brand and cut to the same length and weigh the same. String walking and face walking are allowed.

Archers will shoot from the WHITE peg maximum 35 yards.

TRAD - Open to Male or Female shooting a recurve or longbow without a sight. Bow is to made of at least 50% Wood. Arrows are to have 4 inch feathers and can be made of wood, aluminium or carbon.

Shot with a glove, finger tab or bare fingers. Archers may use up to two nocking devices, but must use the same nocking point and anchor point for each shot. String walking and face walking is NOT allowed. No stabilizers or counter balances are allowed except a quiver designed to hold arrows. No string walking or face walking is allowed. There will be no markings on the bow or on the bowstring that could be construed as sighting marks.

Arrows are to be shot off the hand or shelf of the riser only. An arrow side plate (if used) may only extend one inch above the arrow. The shelf may be built up and the side plate may be built out with a hard material that has a minimal consistency of wood. The shelf and side plate may be covered with a softer material that is no thicker than 1/8 inch. Arrows are to be of the same Brand and cut to the same length and weigh the same.

Archers will shoot from the RED peg maximum 25 yards.

Junior Male Open or JMO (Ages 12-17) - Open to Male or Female shooting a compound or recurve shot with no restrictions on sights, stabilisers, or style of release.

Archers will shoot from the WHITE peg maximum 35 yards

Junior Female Open or JFO (Ages 12-17) - Open to Female shooting a compound or recurve shot with no restrictions on sights, stabilisers, or style of release.

Archers will shoot from the WHITE peg maximum 35 yards

Junior Barebow or JB (Ages 12-17) - Open to Male or Female shooting a compound, recurve or longbow shot without sights. Fingers directly contacting the bowstring using a glove, finger tab or bare fingers. No sighting device of any kind may be used. A rest and plunger are all that may reside within the sight window of the bow. There shall be no markings on the bow or bowstring that could be construed as sighting marks or String walking marks. Face and/or string walking are permitted in this class.

Archers will shoot from the Red peg maximum 25 yards

Cub Open or CO (Ages 11 or under) - Open to Male or Female shooting a compound or recurve shot with no restrictions on sights, stabilisers, or style of release.

Archers will shoot from the Red peg maximum 25 yards

Cub Female or CF (Ages 11 or under) - Open to Female shooting a compound or recurve shot with no restrictions on sights, stabilisers, or style of release.

Archers will shoot from the Red peg maximum 25 yards

PAYOUTS

Payout for Benchmark Money Class (Entry is \$150) –

1st \$1,500, 2nd \$1,250, 3rd \$1,000, 4th \$750, 5th \$500, 6th \$450, 7th \$400, 8th \$350, 9th \$320, 10th \$310, 11th \$300, 12th \$290, 13th \$280, 14th \$270, 15th \$260.

Top five scores in Benchmark Money Class from forty targets (Twenty is affected by rounds being cancelled) will go into a shoot off, where their scores will continue.

The winners in M50,F50,MP,FP,SO HC,FHC,FO,BO,BR,TRAD(Entry is \$50). will receive 1st place \$60,2nd \$40, 3rd \$25*Subject to a minimum of three archers per classes*

Trophy Class (Entry is \$50) will have Trophies awarded and no prize money awarded.

Junior classes (Entry is \$30) will have Trophies awarded and no prize money awarded.

Cub classes (Entry is \$20) will have Trophies awarded and no prize money awarded.

Exhibition shoot outs for top ten unsighted and sighted (These are for anyone not shooting in Benchmark Class). Will be marked distance. Must shoot in an adult class. General rules apply.

There is no limit on arrow speed as long as arrows are five grains per pound.

Where an archer's equipment is shot at five grains per pound does not generate 290 feet per second the archer may use arrows less than five grains per pound.

Arrows are to be all the same length, size and make.

Draw weight shall not be adjusted after entering the shooting course.

The maximum draw weight for each class shall be as follows - Cub Classes - 40 pounds, Junior Classes - 60 pounds and all Female, Male and Traditional Classes - 80 pounds.

The Benchmark 3D Association range officials reserves the right to check and enforce any competitor's equipment complies with this rule book at any time they see fit to do so. Any person found to be in breach of any of these rules will be disqualified from the event.

TEAM SHOOT

Entry is additional \$10 per archer.

Pre nomination before the event or on the day before shooting starts. Open to all archers cubs, junior and adult. Teams will be randomly selected. Scores from each team member will be added together to make the combined team score. The highest combined team score over Ten targets will be awarded the winner.

Awards and prizes are –

1st Place Team will receive \$30 for each team member

2nd Place Team will receive \$20 for each team member

3rd Place Team will receive \$10 for each team member.

A certificate or trophy will be award to each member of 1st, 2nd and 3rd place team.

Benchmark 3D Events have two score cards to be filled in, one for the official and one as check and completed for each archer.

Score cards are to be split between two score keepers.

Both score keepers must agree on a score before arrows are pulled.

All arrows must remain in the target until all arrows are scored.

No one is to pull arrows early or they will be scored zero.

The arrow shaft must be touching the line of the highest scoring line to be scored the higher value.

Any arrow deflecting by contact with another arrow already in the target and has visible damage is to be score where the arrow hit lays in the target.

Robin Hood arrow in the nock of another arrow will be scored the same as the arrow it is embedded in.

An arrow that bounces off or passes through a target is to be re shot. This does not include an arrow that bounce off high on the back of the target due to a poor shot and misses. This arrow will be scored zero.

Score cards must be legible and filled out as 12, 10, 8, 5, and 0. Score cards not filled out correctly will be award zero.

An arrow embedded in the horn of an animal or not touching body colour will be scored as a zero. Targets with legs or hooves of a different colour to the main body will still be considered as body colour for scoring. E.g. Bedded Deer

Scoring at Benchmark events will use the universal scoring system of 12 rings, 10 rings, 8 ring, and 5 rest of the body and 0 for a miss. Targets that have material surrounding the outline of the animal e.g. Turkey which has a base of addition rubber that is not the body of the target, the additional material will be scored 0 points.

There are two 12 rings on a target. These are the small rings at the bottom and top of 10 rings. The bottom 12 is the normal 12 in play for all archers. A shooter may choose to shoot for the top 12 but must let their group know before they fire an arrow. If shooting for the top 12 the bottom 12 is not in play and will be scored a 10 if hit.

If there is a tie of score there will be a count back on the number of 12 rings hit for the weekend. If scores are still tied, there will be a shoot off for the closest to the centre of a 14 ring on the selected target.

Score cards will be verified at the end of each days shooting.

Score cards are to have the archer's name, Initials of the score keeper and initials of a witness in the group that agrees these cards are correct.

Archers are to hand their score cards in as a group.

Once score cards are handed in no archer can change their score if added up wrong. Benchmark official can lower a score if it has been put in at a higher score than it should be.

Once official Scoring has been posted archers may collect their check score cards if they wish to keep the check card.

PROTESTS

Any Protest is to be made within one hour of shooting finishing for the day. The Protest is to be made in writing and with the \$50 Protest Fee. If the Protest is upheld the \$50 will be returned to the archer.

Decisions of the Protest made by Benchmark official will be final.

Benchmark Money Class Entry is \$150

Payout for top 15 places.

Adult Classes Entry is \$50 - M50,F50,MP,FP,SO AHC,FHC,FO,BO,BR,TRAD.

Payout for top 3 places.

Subject to a minimum of three archers in a class

Highest Overall Female Score

The highest overall female score from any adult peg will be awarded \$250

*** (Trophy Class Peg Not Included) ***

Trophy Class Entry is \$50

Trophies awarded, No prize money awarded.

Junior Classes Entry is \$30

Trophies awarded, No prize money awarded.

Cub Classes Entry is \$20

Trophies awarded, No prize money awarded.

Team Shoot

1st Place Team -\$30 for each team member

2nd Place Team -\$20 for each team member

3rd Place Team - \$10 for each team member.

A certificate or trophy will be awarded to each member of 1st, 2nd and 3rd place team.

Payout for Benchmark Class Entry is \$150

1st \$1,500
2nd \$1,250
3rd \$1,000
4th \$750
5th \$500
6th \$450
7th \$400
8th \$350
9th \$320
10th \$310
11th \$300
12th \$290
13th \$280
14th \$270
15th \$260

Top 5 shooters will progress into a final shoot out* Shooters score will continue on throughout the shoot out to award the winner*

All Adult Classes for the Following Entry is \$50

M50,F50,MP,FP,SO MHC,FHC,FO,BO,BR,TRAD.

The winners will receive

1st \$60 Place
2nd \$40 Place
3rd \$25 Place

Subject to a minimum of three archers in a class

Highest Overall Female Score

The highest female overall score from any adult peg will be receive
\$250 Prize

Eligible classes are - Benchmark, F50, FP, SO, FHC, FO, BO, BR, TRAD

This is to encourage all female archers in the sport

Trophy Class Entry is \$50

Trophies awarded and no prize money awarded.

Junior Classes Entry is \$30

Trophies awarded and no prize money awarded.

Cub Classes Entry is \$20

Trophies awarded and no prize money awarded.

Team Shoot

1st Place Team -\$30 for each team member

2nd Place Team -\$20 for each team member

3rd Place Team - \$10 for each team member.

A certificate or trophy will be award to each member of 1st, 2nd and 3rd place team.



TAZMIN TIME!



- FACTS -



16 - TAZMIN celebrated her 16th birthday this week.

2 - TAZMIN gets 2nd for Junior Womens Compound Division.

3 - TAZMIN places 3rd in Womens Compound Division

Turning 16 was never going to be enough for Australian PSE TEAM member TAZMIN FORREST who competed at the 2020 Indoor World Series in Sydney this past week.

Tazmin shot her custom coloured PSE Supra Focus to 2nd place in the Junior Womens division which featured some hot competition and only 2 point shy of first.

Today cemented her dedication to training and mindset by taking out bronze in the Womens Compound Division which was eventually won by World renown US archer Paige Pearce Gore.

Photo - Archery Australia





“This weekend I was in Sydney for the first ever Sydney Indoor Archery Festival round of the World Archery Indoor World Series. The event has been amazing. I didn’t think I would get a Bronze Medal at a major international tournament and gave it my all.

The quarter final was against Andrea Robles from Philippines. It was a close match, being tied up all the way until the 4th end and then having us both knock out perfect 30s to finish. In the end I was one point clear, 144 to 145 to go to the semi final.

I ended up losing the semi final to USA archer Paige Pearce, the current world #3. This put me into the Bronze medal match against Anna Walls.

Anna and I had some close matches last year. This one went to a shoot off after we tied on 143. I got the 10, Anna just out. It was an extremely close and nerve racking match, I don’t think I’ve ever shaken so much in my life from excitement and nerves, or given my parents a bigger heart attack!

I’ve learnt a lot this week, met some of the worlds top archers and had a heap load of fun!

Thank you to both Amanda Barkway and Alyssa Mollema for helping me out in the medal match with coaching and agenting.

And finally a HUGE! Thank you to Dad for driving me to Sydney and supporting and encouraging me every extra step whilst there, PSE Archery Australia & Archery Supplies for supporting me, and all of the organisers, officials, judges and helpers that made this event possible.